

# 1206 PUTNAM AVENUE

BUSHWICK, BROOKLYN



**COMMUNITY USE  
SPACE FOR LEASE**

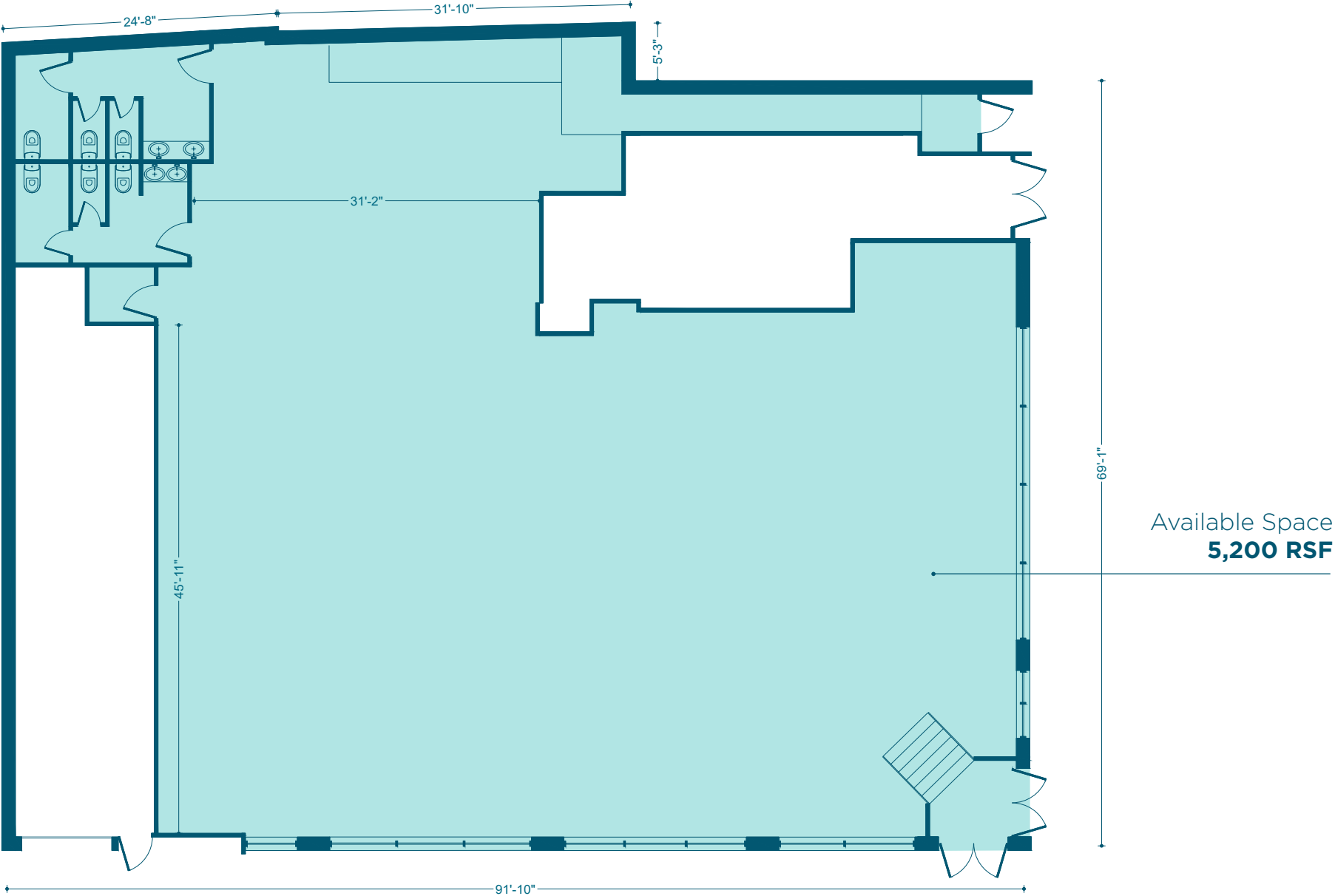
**SPACE HIGHLIGHTS**

AVAILABLE SPACE	LOCATION
Ground Floor <b>5,200 RSF</b>	Corner of Evergreen Avenue and Putnam Avenue
CEILING HEIGHT	FRONTAGE
10 FT	120 FT
DIMENSIONS	ZONING
69 FT x 92 FT	R6
OCCUPANCY	ASKING RENT
Vacant	\$33 PSF
DESCRIPTION	HIGHLIGHTS
NEW BUILDING, Prime Divisible CORNER SPACE! Perfect for Daycare, Medical / Office tenant(s), in the HEART OF BUSHWICK!	<ul style="list-style-type: none"><li>• High Ceilings</li><li>• ADA Accessible</li><li>• Landlord open/willing to customize layout(s)</li><li>• HVAC</li><li>• Private ADA Restrooms</li><li>• Windowed / Natural Light</li></ul>

# BUSHWICK BROOKLYN

# 1206 PUTNAM AVENUE

## FLOORPLANS & DETAILS



# BUSHWICK BROOKLYN

# 1206 PUTNAM AVENUE

## EXISTING CONDITION



# BUSHWICK BROOKLYN

# 1206 PUTNAM AVENUE

## NEIGHBORHOOD DEMOGRAPHICS



**164,448**

POPULATION  
WITHIN 2-MILE  
RADIUS

---



**35.10 Yrs**

AVERAGE  
POPULATION  
AGE

---



**3.67%**

POPULATION  
GROWTH  
SINCE 2010

---



**\$74,558**

AVERAGE HHI  
WITHIN 2-MILE  
RADIUS

---



**4,448**

TOTAL BUSINESSES  
WITHIN 2-MILE  
RADIUS

---



**\$1.1 bn**

ANNUAL SPENDING  
WITHIN 2-MILE  
RADIUS

---

# BUSHWICK BROOKLYN

# 1206 PUTNAM AVENUE

## NEIGHBORHOOD & TRANSPORTATION

### NEIGHBORHOOD TENANTS

- MEMORIES EVENT SPACE
- Brooklyn Dragons Lair
- Travis Chantar Photography
- Caffeine Underground
- Thomas Warren Field School
- Artist & Craftsman Supply Bushwick
- House Party Cafe & Lounge
- Broadway Krown True Value Hardware
- United States Postal Service
- Wilson Medical Center
- Angela's Bakery
- Irving Square Park
- Family Dollar
- Father Knows Best
- Queens Brewery
- Sunrise/Sunset
- Heckscher Playground
- CTown Supermarkets
- Aquino's
- Wax On Wood
- Jefferson Hardware & More
- Wilson Medical
- Family Dollar
- Father Knows Best
- House Party Cafe & Lounge
- Artist & Craftsman Supply
- Halsey St
- Gates Ave
- Wilson Ave

### TRANSPORTATION

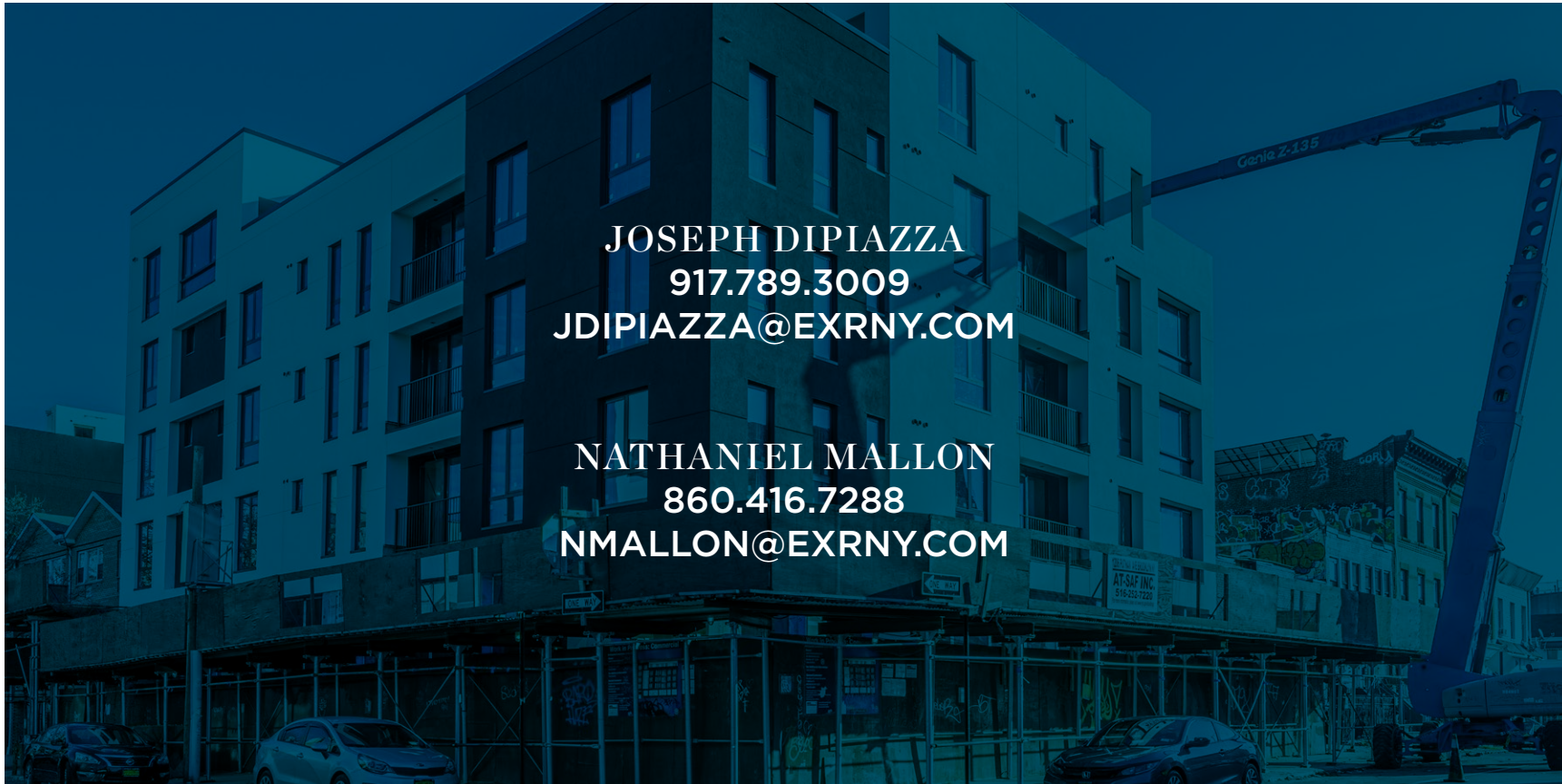
- 9 Min Walk at Gates Avenue (0.4 mi)
- 9 Min Walk at Halsey Street (0.4 mi)
- 18 Min Walk at Myrtle Wyckoff (0.8 mi)



**BUSHWICK BROOKLYN**

**1206 PUTNAM AVENUE**

**CONTACT**



**JOSEPH DIPIAZZA**  
**917.789.3009**  
**JDIPIAZZA@EXRNY.COM**

**NATHANIEL MALLON**  
**860.416.7288**  
**NMALLON@EXRNY.COM**

